

AD

ARCHITECTURAL DIGEST • GENIUS DESIGNS • INSPIRING ART • LUXURIOUS HOMES

Strictly A-List

DECORATING
SECRETS FROM
THE WORLD'S
TOP DESIGNERS

DREAM ESCAPES

*Delightful
vacation homes
from Mexico
to Australia*

PLUS

*Dubai's
ultrasonic
architectural
revolution*

hello Sunshine

Top trends for bold and radiant summer spaces

AD *tastemakers*

Great international designers, the **Grand Dame** of Dubai's interior design industry and shopping with Beirut based **Vick Vanlian**

JAIME HAYON

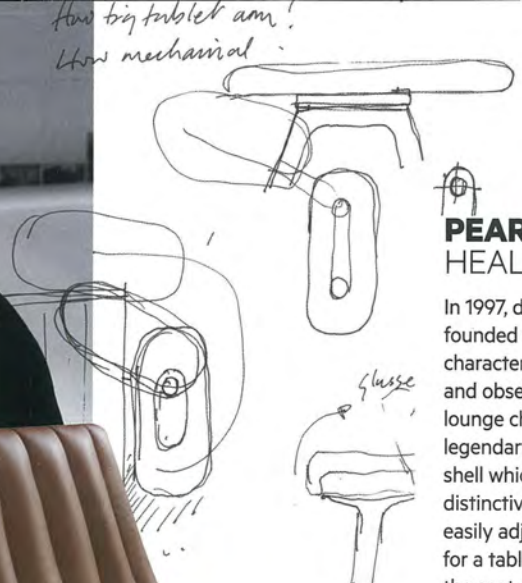
GARDENIA CON PÉRGOLA,
BD BARCELONA

The famous Spanish designer started to work with BD Barcelona in 2004 and, since then, the winning collaboration produced great hits such as the Lounger, the Showtime chair and the Monkey side table. One of the most successful creations is without a question the Gardenia con Pérgola, an elegant garden chair that makes a statement in any space. With a skeleton back that can be personalised, the chair is made of cast and extruded aluminium, coated with micro textured paint. No wonder Hayon looks so relaxed when sitting on it.

MASTERS *of* DESIGN

From the designer's mind to the shop floor, every product goes through several stages of development. AD revisits the greatest furniture hits and the minds behind them

Words **SAMIR WADEKAR**

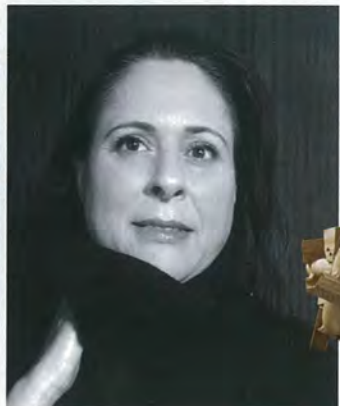
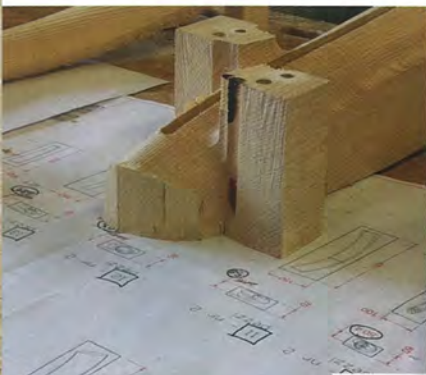
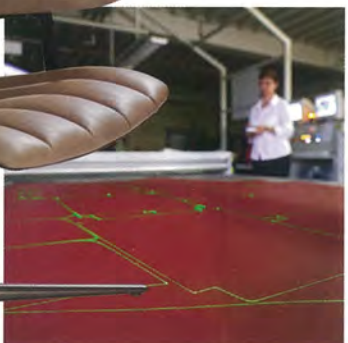


PEARSONLLOYD HEALEY LOUNGE, WALTER KNOLL

In 1997, designers Luke Pearson and Tom Lloyd founded their studio PearsonLloyd. Their work is characterised by a strong aesthetic fused with insight and observation. The 'Healey Lounge' is a modern lounge chair that pays tribute to the seats of legendary classic cars. This elegant piece has an outer shell which holds soft upholstery—underlined by its distinctive piped quilting. The upholstered armrest is easily adjustable for comfort, and can act as a surface for a tablet or smartphone. An elegant shell envelops the seat and armrests, creating a lightweight and casually elegant, yet comfortable piece of furniture.



IN THE MAKING
Sketches showing the development process of 'Healey Lounge' and early stages of the prototyping. Luke Pearson (left) and Tom Lloyd



PIECED TOGETHER
The chair is assembled using 30 pieces of solid ash wood, a malleable and resistant European material

ROSSELLA PUGLIATTI MOVE, GIORGETTI

In 2011, Architect Rosella Pugliatti opened her own design studio and began working with international design companies to create furniture. Presented at the 2014 Salone del Mobile in Milan, the 'Move' rocking chair with its serpentine form is based on two interlocking wooden structures crafted using 30 pieces of ash wood - available in natural, anthracite grey, and walnut finishes. The seat and backrest of this modern interpretation of the classic rocking chair are in compact rigid polyurethane and are cold-foamed with flexible polyurethane, which can be upholstered in fabric or leather.

